

How to get started with the Stone Edge Module

The Stone Edge Module for ReadyShipper is designed to get the most out of your Stone Edge Order Manager. It integrates ReadyShipper shipping software to deliver a multi carrier system capable of importing and shipping your orders individually or in batch. After shipping, your orders can be updated back to Stone Edge with tracking, shipping method and ship date.

The Module can be used with both Standard and Enterprise editions. The following pages will walk you through set-up with the Standard edition using Microsoft Access.

The new Stone Edge Module for ReadyShipper includes the following:

- Stone Edge Module Installer
- ReadyShipper Script

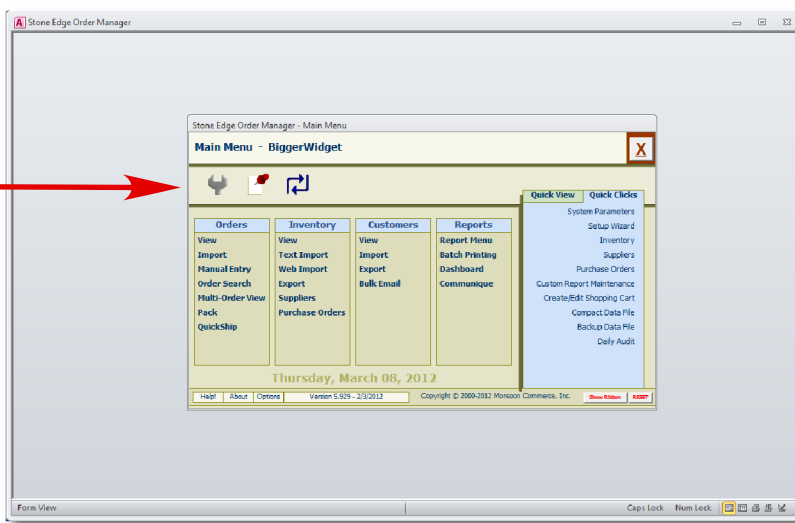
This module is configured with a standard set of business rules. It will only import approved orders up to 30 days old and will predetermine if these orders are shippable. An order is considered shippable if it has not been posted with a ship date.

To get started:

- You must have Microsoft Access and Stone Edge Order Manager fully installed on your PC.
- ReadyShipper 6.5.0 or greater downloaded to your desktop.
- The Stone Edge Order Manager module for ReadyShipper downloaded to your desktop.

Start by opening your Order Manager software.

Click on the
Maintenance Icon
(Wrench)



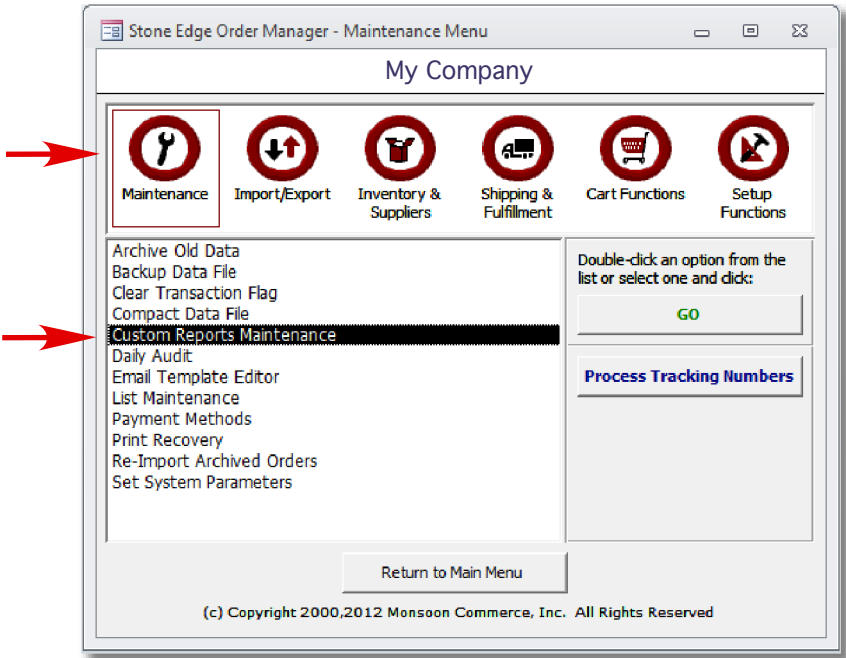
Stone Edge Module Set-up

The maintenance screen is shown below. This is the first of two steps. In this step, you import the custom query for use with ReadyShipper.

Click on the **Maintenance** screen (Wrench)

Click on **Custom Reports Maintenance**

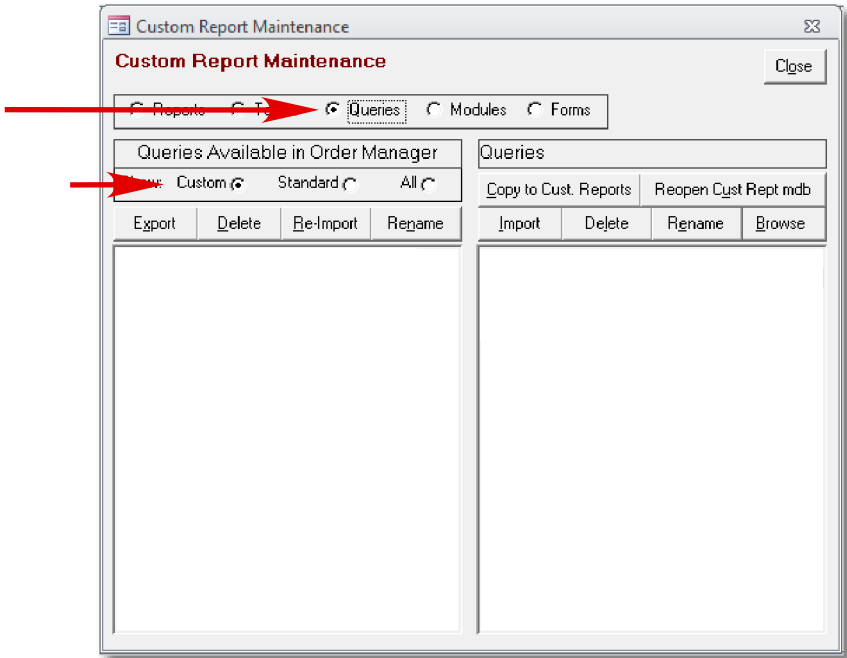
- Click **Go**



Access the Maintenance Screen

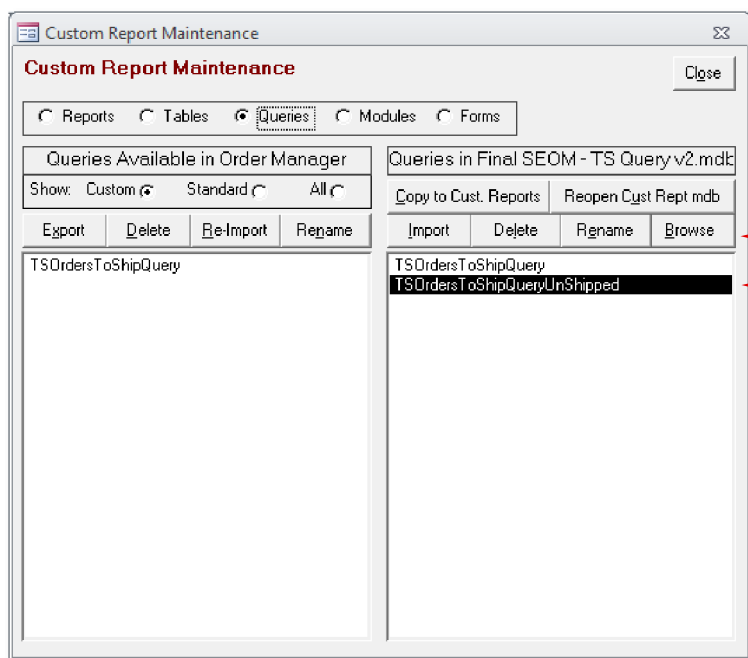
Select the **Query** radio button

Click the **Custom** radio button



Show Custom Reports

Stone Edge Module Set-up



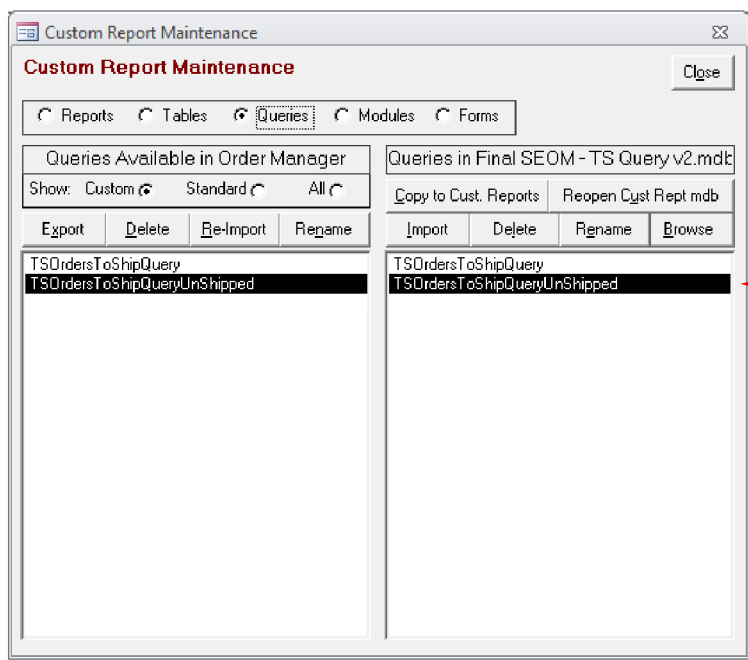
Click the **Browse** button

Open up the TrueShip supplied database file (.mdb) with the SEOM query in it.

- It is called:
TSOrdersToShipQueryUnShipped

**** Please note that if you show two options the “TSOrdersToShipQuery” will import all orders. It will not ignore shipped orders.**

Show Custom Query



Highlight the query:
TSOrdersToShipQueryUnShipped

- Click **Import**

- **This completes the first step.**

Import TrueShip Query

Stone Edge Module Set-up

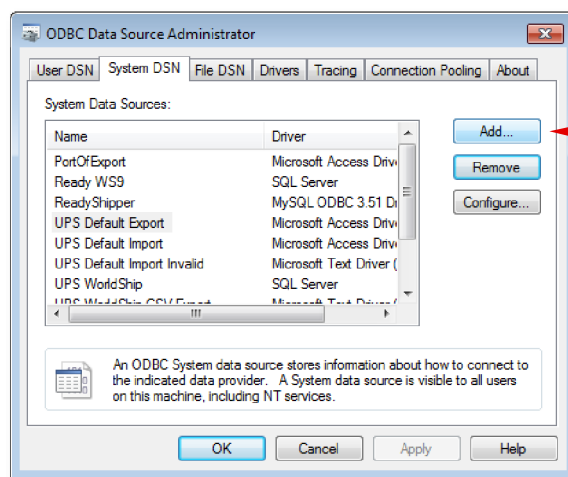
The next step is to set-up the ODBC connection between ReadyShipper and your Stone Edge software.

If you are a Windows 7 user you have options when it comes to ODBC utilities. The utility you will be using is called “**odbcad32.exe**”. Using the following path, find and launch this utility:

CDrive > Windows > SysWOW64 > odbcad32.exe

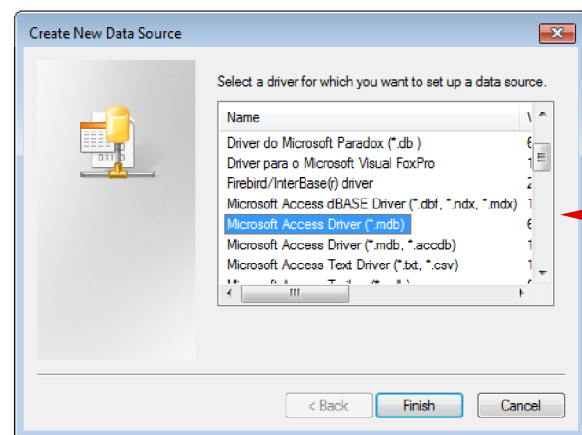
After launch your will get the following screen:

1) Select the tab **System DSN** and choose **Add**.



Add A New System Data Source

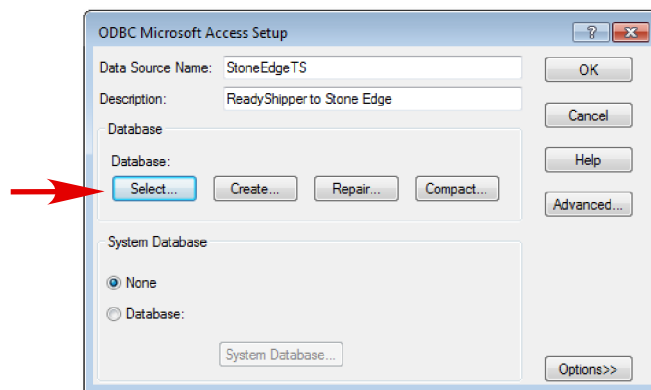
2) Select **Microsoft Access Driver (.mdb)** and click **Finish**.



Select Microsoft Access Driver (.mdb)

3) Enter **StoneEdgeTS** into the Data Source Name field as shown. Then give it a **description** that you can easily identify.

• Click **Select**



Enter “StoneEdgeTS” as Data Source Name

Stone Edge Module Set-up

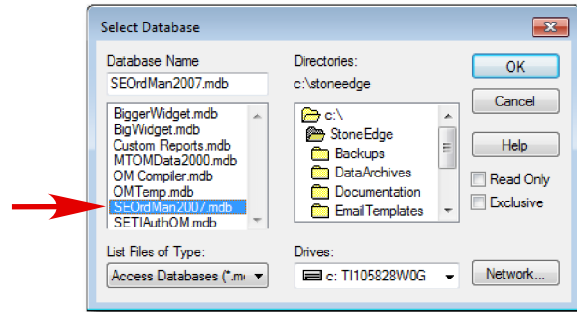
In this step you will select your Stone Edge Database.

Your selection will depend on version of Stone Edge Order Manager. Most commonly this will be one of the following: SEOrdMan2002.mdb, SEOrdMan2007.mdb (standard version) or SEOrdManEnt2002.mdb, SEOrdManEnt2007.mdb (enterprise version)

4) Select your **C Drive** from the Directory on the right and choose the **Stone Edge folder**.

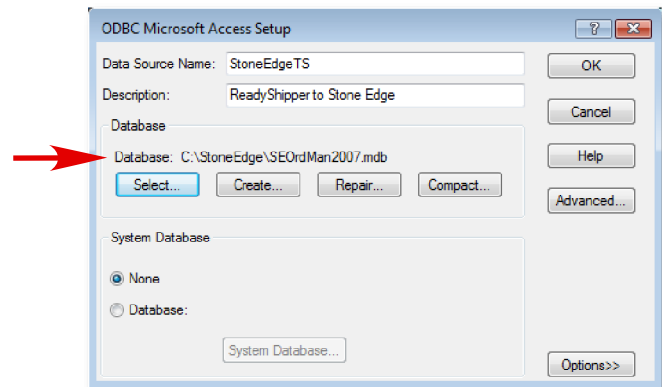
The table on the left will then fill in with possible database selections. Choose from the following: SEOrdMan2002.mdb, SEOrdMan2007.mdb (standard version) or SEOrdManEnt2002.mdb, SEOrdManEnt2007.mdb (enterprise version).

- Click **OK**



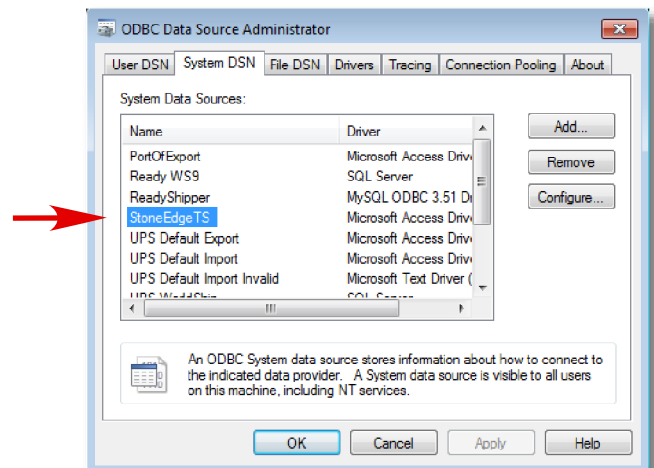
5) Your database will now appear and the ODBC Access Setup is complete.

- Click **OK**



6) **StoneEdgeTS** will now appear as an available System DSN. It can now be accessed by ReadyShipper.

- Click **OK**



Stone Edge Module Set-up

This is the final step.

If you have not done so already, download the Stone Edge Module from TrueShip.com. Save it to your desktop. It will look like a puzzle piece.



Stone Edge Module

Double click on the puzzle piece to install the module and complete setup. The Stone Edge Module will ensure all remaining connections.

Now it is time to test your connection.

From ReadyShipper's main shipping screen click on:

Import > Edit Maps > Select Stone Edge and click Edit Map > Continue

Check your ODBC connections

Confirm all your settings are as shown.

- 1) The ODBC source is set to **StoneEdgeTS**
- 2) The login is blank
- 3) The table is **"TSOrdersToShipQueryUnShipped"**

If all settings appear correct you can exit this screen.

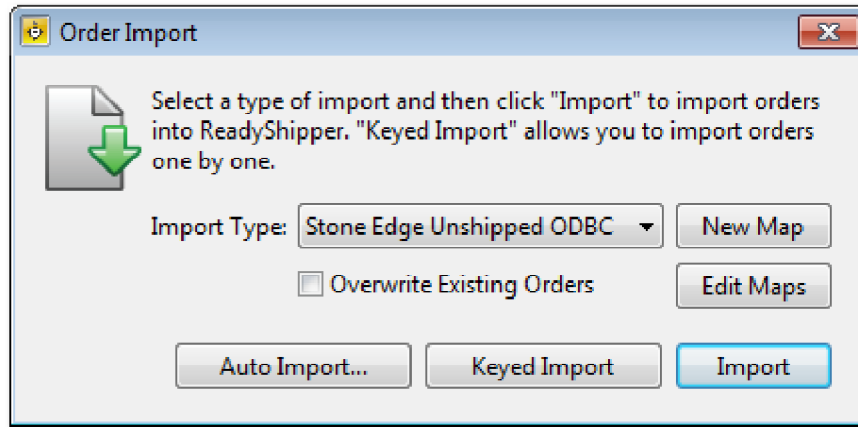
****** If any changes need to be made so that your screen is identical to the one shown above you will need to click **Continue** until you reach the end of the Mapping Wizard. Do not make any changes to the settings as you pass through the pages of the Wizard.

On the last page of the Mapping Wizard click Finish.

Stone Edge Module Set-up

You are now ready to import your orders.

Unlike other modules, you will not see a Stone Edge Module appear in ReadyShipper's Module menu. To import your orders by keyed import or batch, select the Import button on ReadyShipper's main screen and choose **Stone Edge** from the Import Type drop-down menu.



You then have the following choices:

Import:

- Imports all unshipped orders for the last 30 days
- Any orders with tracking numbers will not be imported
- Any items marked as drop-ship will not be imported

Note: As an option the "Stone Edge ODBC" import is also included. This selection does not follow the rules outlined above and will import all orders for the last 30 days regardless of tracking and drop-ship status.

Keyed Import: Enables you to key or scan in an order number to process shipments on demand

Auto-Import: A batch import feature that will run automatically, based on a timer that you set, to automatically import new orders. Like the standard Import feature, Auto-Import looks back as far as 30 days.

Updating: Find this feature in ReadyShipper's File menu. To update your orders simply go to **File > Export Order(s) > ODBC > Stone Edge**

For additional instructions on how to use ReadyShipper, including demonstrational videos, PDF's and sample import files look to the Demos and Manuals page at www.trueship.com

You can also contact us with your questions by visiting the Support page at www.trueship.com and submitting a service ticket.

Stone Edge and the Stone Edge brandmark, are trademarks of Stone Edge, Inc., All Rights Reserved.

