

How to get started with the Atandra T-Hub Module

The T-Hub Module for ReadyShipper is designed to get the most out of your Atandra T-Hub order management system. It delivers a simplified shipping process with one powerful solution for all your UPS, FedEx and USPS shipments.

Scan or key-in your orders into ReadyShipper to import and process your shipments in real-time. Then, update T-Hub in batch with shipping, tracking and cost information. It is fast, efficient and ReadyShipper's cost saving shipping methods will save you money.

This Module is compatible with all version of T-Hub 10.394 or higher. The following pages will walk you through set-up for the standard T-Hub Module installation.

To get started:

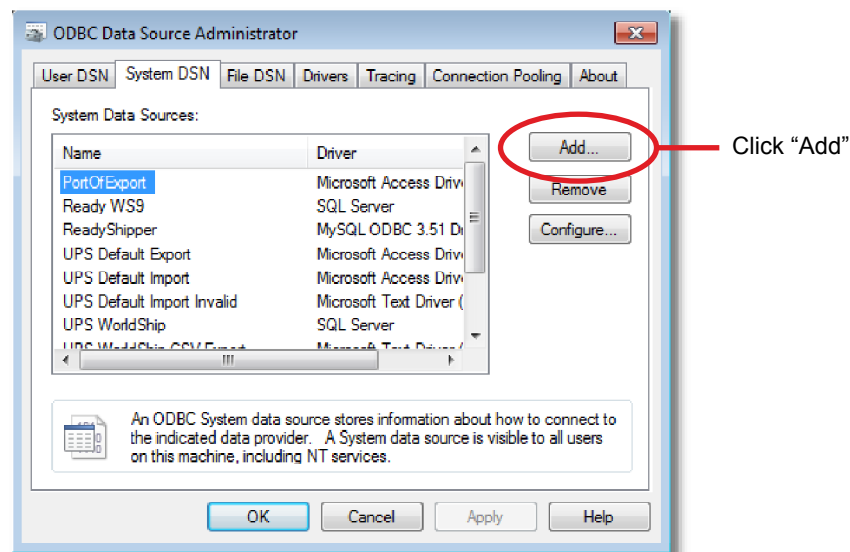
- You must have T-Hub 10.394 or later installed and running on your PC.
- ReadyShipper 6.5.0 or greater installed and running on your PC.

The next step is to set-up the ODBC connection between ReadyShipper and your T-Hub software.

If you are a Windows 7 user you have options when it comes to ODBC utilities. The utility you will be using is called "odbcad32.exe". Using the following path, find and launch this utility:

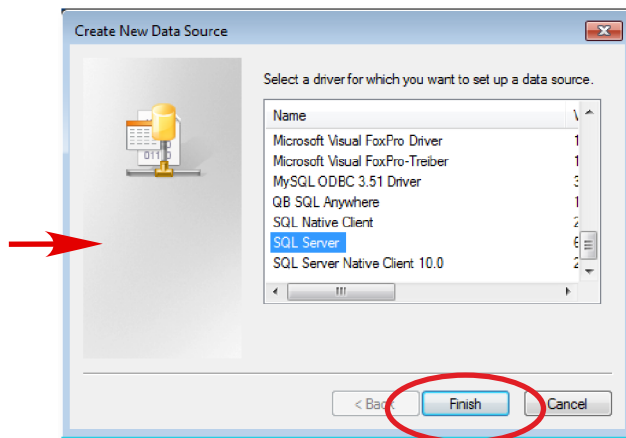
CDrive > Windows > SysWOW64 > odbcad32.exe

1) When this utility opens (shown below) select the tab **System DSN** and click **Add**.



Add a New System DSN

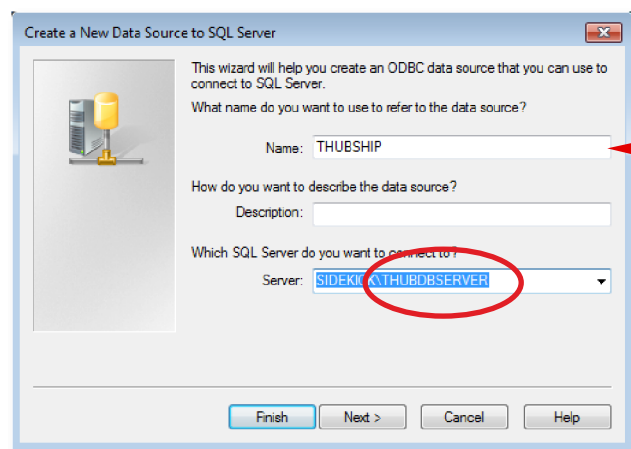
2) Select **SQL Server** from the list of available drivers and click **Finish**.



Add a new System Data Source

3) You are now clear to create a new Data Source

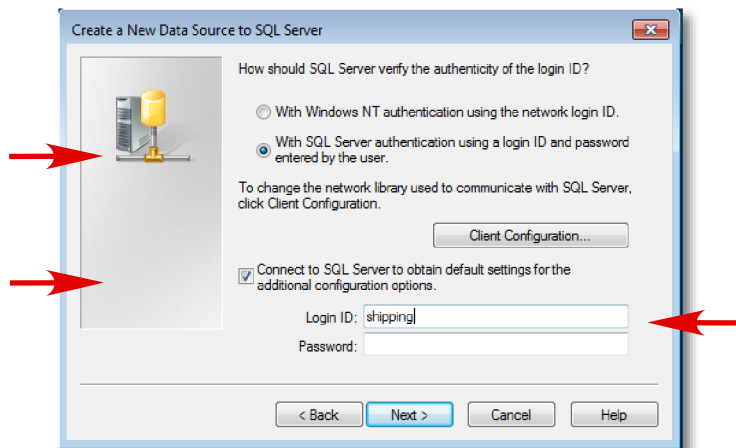
- In the “Name” field type **THUBSHIP** as shown
- From the Server dropdown menu select the path ending in **THUBSERVER**.
- Click **Next**



Name your new data source THUBSHIP

4) Shown here are a couple methods of authentication.

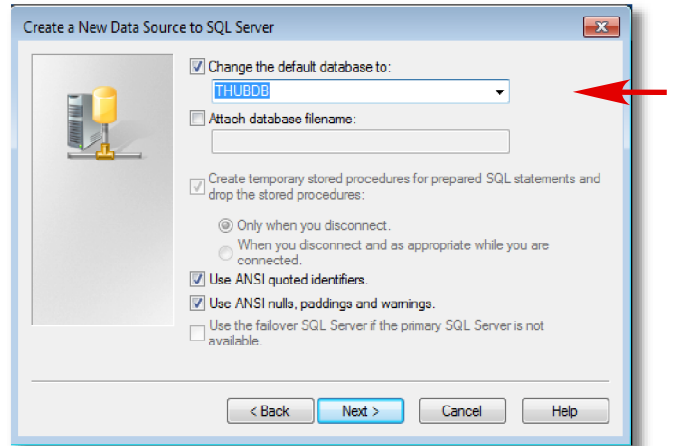
- Select the option “With SQL Server authentication using a login ID and password entered by the user”.
- Select the option to “Connect to SQL Server to obtain default settings for the additional configuration options”.
- In the “Login ID” field type shipping as shown.
- Click **Next**



Setup authentication and enter the Login ID as “shipping”

5) Select the option to change the default database and choose **THUBDB** from the drop-down menu.

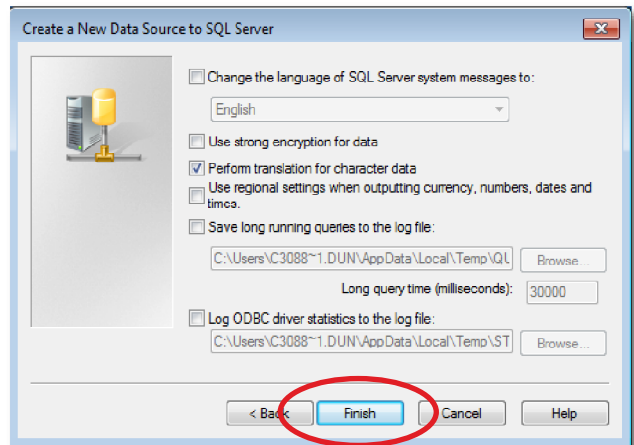
Click **Next**



Change the database to **THUBDB**

6) You are done! No changes on this screen.

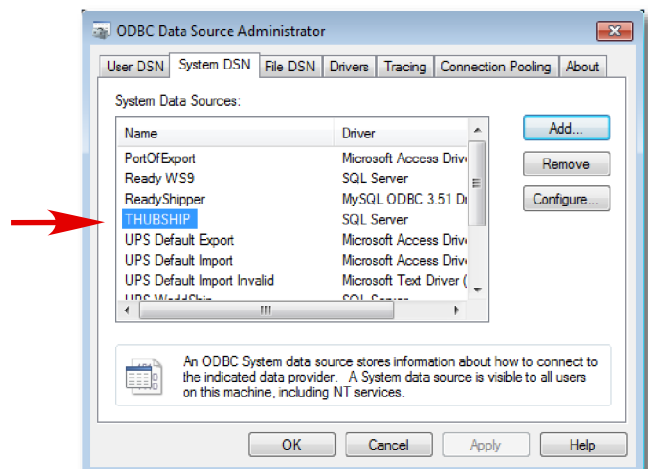
Click **Finish**



Name your new data source **THUBSHIP**

7) **THUBSHIP** will now appear in the list of available data sources

Close the ODBC utility.



Setup authentication and enter the Login ID as “shipping”

T-Hub Module Set-up

This is the final step.

If you have not done so already, download the T-Hub Module from TrueShip.com. Save it to your desktop. It will look like a puzzle piece.



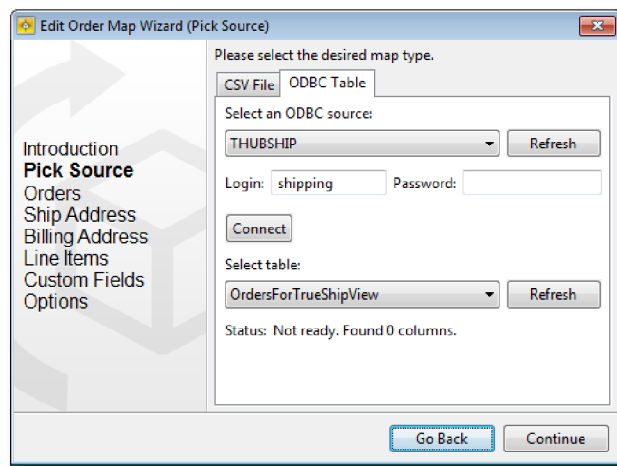
T-Hub Module

Double click on the puzzle piece to install the module and complete setup. The T-Hub Module will ensure all remaining connections.

Now it is time to test your connection.

From ReadyShipper's main shipping screen click on:

Import > Edit Maps > Select T-Hub and click Edit Map > Continue



Check your ODBC connections

Confirm all your settings are as shown.

- 1) The ODBC source is set to **THUBSHIP**
- 2) The login is **"shipping"**
- 3) The table is **"OrdersForTrueShipView"**

If all settings appear correct you can exit this screen.

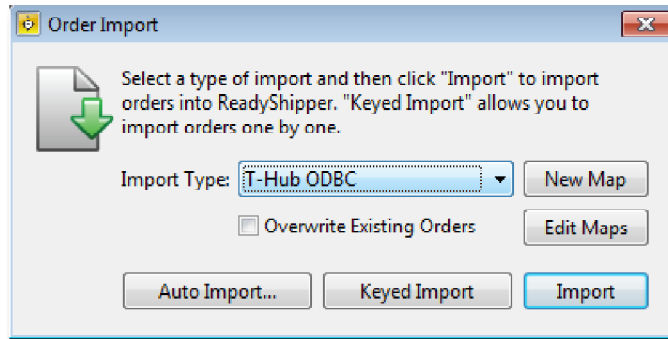
****** If any changes need to be made so that your screen is identical to the one shown above you will need to click **Continue** until you reach the end of the Mapping Wizard. Do not make any changes to the settings as you pass through the pages of the of the Wizard.

On the last page of the Mapping Wizard click Finish.

T-Hub Module Set-up

You are now ready to import your orders.

Unlike other modules, you will not see a T-Hub Module appear in ReadyShipper's Module menu. To import your orders by keyed import, select the Import button on ReadyShipper's main screen and choose "**T-Hub**" from the Import Type drop-down menu.



- Click on **Keyed Import** to open a convenient window to scan or enter your order numbers for real-time import.
- **Updating** your orders back to T-Hub is a batch process. Find this feature in ReadyShipper's File menu. To update your orders simply go to **File > Export Order(s) > ODBC > T-Hub**

For additional instructions on how to use ReadyShipper, including demonstrational videos, PDF's and sample import files look to the Demos and Manuals page at www.trueship.com

You can also contact us with your questions by visiting the Support page at www.trueship.com and submitting a service ticket.

Atandrand the Atandra T-Hub brandmark, are trademarks of Atandra, Inc., All Rights Reserved.

